

# FARM GRAIN SYSTEMS



**SOUTHERN BIN CONSTRUCTION**  
A DIVISION OF UNIT LINER COMPANY





# FEATURES

SIOUX STEEL FARM GRAIN SYSTEMS

# 10 YEAR WARRANTY

Based in Sioux Falls, SD, Sioux Steel knows how drastically weather can alter any structure.

Sioux Steel offers the **longest warranty** in the industry on farm bins.

Our 10 year warranty comes standard on every farm bin. Plus, there is no additional cost for this feature. You get a great quality bin with a warranty that is the longest in the industry, giving you peace of mind.

Sioux Steel stands behind its products and wants you to have the best possible experience.

## AVAILABLE SIZES

FARM GRAIN SYSTEMS

FARM - STANDARD (64 LBS/BU)										
Diameter	15'	18'	21'	24'	27'	30'	33'	36'	42'	48'
3 Rings										
4 Rings										
5 Rings										
6 Rings										
7 Rings										
8 Rings										
9 Rings										
10 Rings										

**UNSTIFFENED**

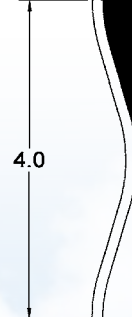
**Unstiffened or 2-Row Stiffened Models**

## COMPARE BIN PRODUCTS

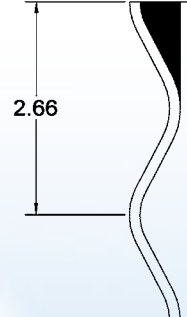
### What type of material is utilized?

1. Type of corrugation?
2. Tensile strength?
3. Galvanized coating weight?
4. Does it include a warranty?

4" CORRUGATION



2.66" CORRUGATION



### What are the roof load ratings?

Inquire about what snow load the roof is rated for.

### Grain weights and densities?

Can the bin structure withstand increased grain weights and free flowing grain densities now and into the future?

**4" corrugated sidewall sheets** provide better vertical load carrying capacities. While unloading, grains flow easily down the bin wall with less resistance.

**70,000 PSI TENSILE STRENGTH STEEL**



**4" CORRU GATION**

4" corrugation on sheets **reduce friction load on the sidewalls** and allows grain to flow easily down bin wall with less resistance. Fewer sheets cover a wider area, lowering construction costs.

**ROOF 10K**

Sioux Steel farm bins are engineered using the latest technology for all your grain storage needs now and into the future. **Roofs feature peak load ratings up to 10,000 lbs.**

**GALVANIZED**

**Galvanized steel** is standard on all Sioux Steel grain systems. This coating on each 44" tall bin sheet and roof panel provides years of protection from harsh weather conditions and rust.

**64 lb/bushel**

Sioux Steel farm bins are **designed for grains weighing up to 64 lb/bushel!**

The industry standard is just 60 lb/bushel. Our farm bins are designed for grain weights of the future.

**70,000 PSI**

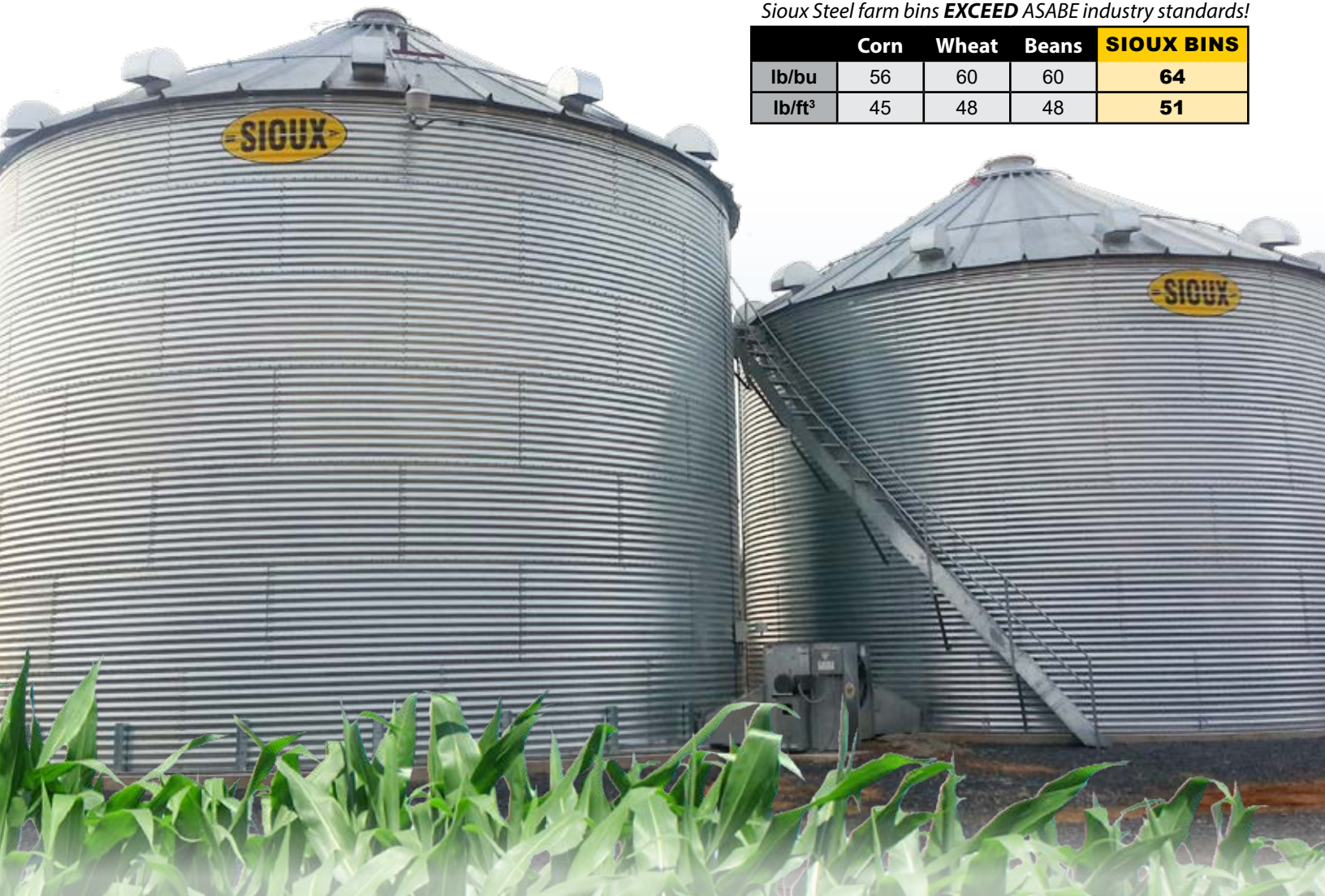
Manufactured with **70,000 psi tensile strength steel** (55,000 psi yield strength) and utilizing 4" corrugation, Sioux Steel farm bins offer the ultimate in sidewall vertical strength.

**51 LB/FT3 GRAINS**

Each bin is designed for **free flowing grain densities up to 51 lbs/ft<sup>3</sup>** or 55 lbs/ft<sup>3</sup> including compaction. Sioux farms bins easily handle typical corn densities of approximately 45 lbs/ft<sup>3</sup>.

Sioux Steel farm bins **EXCEED** ASABE industry standards!

	Corn	Wheat	Beans	<b>SIoux BINS</b>
lb/bu	56	60	60	<b>64</b>
lb/ft <sup>3</sup>	45	48	48	<b>51</b>



**MADE IN THE USA**



# ROOFS

SIOUX STEEL FARM GRAIN SYSTEMS



# 10 THOUSAND POUND CENTER LOAD ROOFS

The strongest farm bin roof in the industry! Sioux Steel's farm bin roofs feature **peak load ratings up to 10,000 lbs.**



## SHOP ONLINE!

Search local dealerships or buy direct online.

MSRP product pricing featured along with additional product information.

[www.agpartsdirect.com](http://www.agpartsdirect.com)

## PEAK LOADS

FARM GRAIN SYSTEM ROOFS

### PEAK LOAD ROOF RATINGS

Standard Farm Bins Up To 10 Rings.  
30psf Balanced Snow Load Rating.

Roof Structure	4" Ribs	4" Ribs + Stiffeners
15'	3,000 lbs.	
18'	3,000 lbs.	
21'	3,000 lbs.	
24'	3,000 lbs.	
27'	3,000 lbs.	
30'	3,000 lbs.	
33'	6,000 lbs.	
36'	6,000 lbs.	
42'	6,000 lbs.	10,000 lbs.*
48'	6,000 lbs.	10,000 lbs.*

\* For rating purposes only. Heavy roof kits with flat top & full ladder stiffeners at each rib are required to support point loads from catwalk/conveyor. All roofs are rated for 105 MPH wind zone as defined by ASCE 7-10 code.



## FEATURES

### 30-Degree Roof Slopes

Sheds moisture fast off of roof panels.

### Roof Edges

Are rolled 340 degrees to stiffen panel edges and reduce vibration.

### Bridging Rings

33' - 48' diameter bin roofs have standard bridging rings with locking collars that crown the roof for added strength. Optional bridging rings available on 24' - 30' roofs.

### Cap Options

Standard 30" fill cap openings are designed for one-handed control. Optional ground control fill caps available. 60" flat top caps are optional on 24' to 48' bins for permanent installation of cross augers or spouting.

### Ladders

Roof ladders are included in every bin package.



**LARGEST MAN-WAY IN THE INDUSTRY**

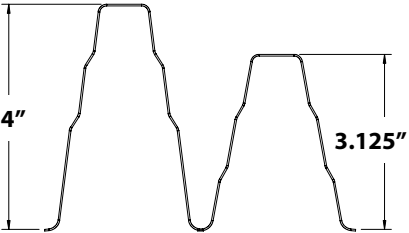
[www.southernbin.com](http://www.southernbin.com) • [marc@southernbin.com](mailto:marc@southernbin.com) • (870) 474-6152



## FEATURES

### 4" Roof Ribbs

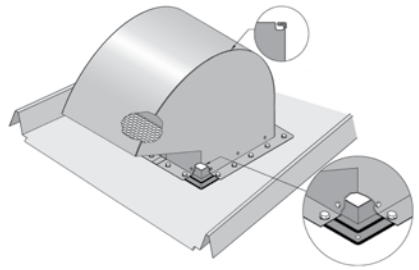
The tallest in the industry! 4" ribs **come standard on all Sioux Steel bins.** This makes the bin roof more resistant to high winds and larger snow loads.



42' & 48' bins feature tension straps that are assembled at the bottom of each roof panel for additional strength.

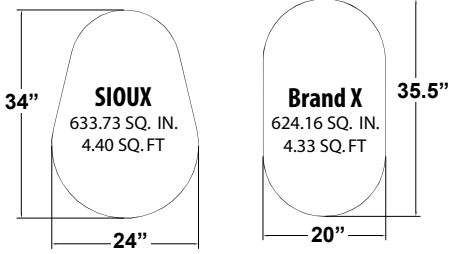
### Hooded Roof Vents

Steel roof vents have wide 18" x 18" inlet areas for free air movement. Our pre-punched roof panels offer lap over design on the steel roof vent to prevent leakage of moisture and condensation.



### Man-Way

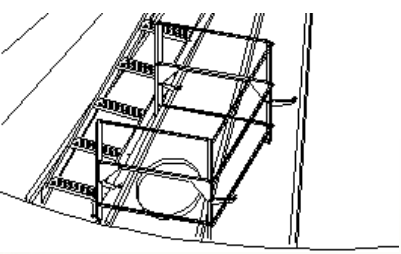
You won't have to wonder if you can make it through the man-way when you're out in the elements with lots of layers of clothing on. The most user-friendly man-way!



## ACCESSORIES

### Man-Way Guard Rails

Guard rails on 3 sides of manhole provide extra stability while accessing bin.



### Roof Stairs/Handrails

Wide walkways with double hand and intermediate rails. Handrails are sizes to fit outside the top roof rungs.



### Peak Walk-Arounds

Sizes to fit center fill holes of most bins. 7', 9', 10' and 13'6" sizes available.



MADE IN THE USA



# ACCESSORIES

SIOUX STEEL FARM GRAIN SYSTEMS

**64  
LBS./  
PER BUSHEL**

"We've seen test weights of grains increase over the last decade due to new hybrids and genetics. We now average 60 lb. per bushel corn, 60 lb. per bushel wheat and our soybeans range in the 55 lb. to 60 lb. range. Grain storage facilities need to account for these increased test weights in the engineering of their products".

*Pat Tracy, Farm Manager,  
J.E.S. Farms, Pierre, S.D.*

Engineered for grains weighing up to 64 lb/bushel, Sioux Steel farm bins exceed ASABE industry standards!

ASABE	lb/bu
Corn	56
Wheat	60
Beans	60
Sioux	64

## FLOORS

DRYING GRAIN



Floor supports are available in 20 or 17 gauge.



Crosscut or standard perforated planks available.

### Floor and Floor Supports

Designed to develop equal air pressure under the entire floor surface. Floor supports are available in 20 or 17 gauge. Made from galvanized steel formed with ten vertical ribs to support grain depths up to 37 feet at the eave. Floor planks available in 20, 18 & 16 gauge.



### LJI Floor Supports



1. High strength per square foot of floor.
2. Unobstructed air movement.
3. Ease of erection & stability.

## LADDER & CAGES

SAFELY ACCESS ROOFS



### Ladder & Cage Systems

Manufactured from sturdy aluminum sections that fit the bin side wall with each ring.

An economical way to gain access to the roof of the bin while keeping your safety in mind.

- Multiple platform configurations on a single bin are available to create a midway rest point.
- Platforms can be built for right or left hand operation.



DESIGNED FOR FREE FLOWING GRAINS UP TO 51 LBS/FT<sup>3</sup>



## DOORS

### GRAIN BIN ACCESS

#### Solid, Tieless Walk-In Doors

Truly a walk-in door with no cross ties. Clear span opening allows anyone to walk in & out without having to crawl or unbolt any parts.

#### Door Steps

When a bin door is too far away from concrete pad, add a larger door step for easy access when entering or exiting the bin.



## STAIRS

### CONVENIENT ACCESS

#### Easy Steps/Platforms

Easy steps are specifically designed for 44" bin sheets. Stair treads are 24" wide with 8.8" rise per step.

Two platform options are available with 50"x24" or 44"x24" decks.



#### Sidewall Stairs

Fit on 15' to 48' bins with 44" sidewall sheet using existing holes in the sheets.

Stairs can go on in either direction depending on your operational needs.



#### Platform Filler

Platform fillers are utilized when there is a gap between two platforms. For example, when bins have sidewall and roof stairs, the filler ties the platforms under the roof stairs and manhole together.



MADE IN THE USA



# ACCESSORIES

SIoux STEEL FARM GRAIN SYSTEMS



# 1918

## SIoux STEEL HERITAGE

Founded in 1918, Sioux Steel Company is now in its fourth generation as a family-owned company. Our mission is not only to satisfy our customers, but we want them to be **delighted** to do business with us. Whether your order for Sioux products is large or small, frequent or occasional, we feel a definite obligation to provide you with high-quality products and outstanding service.



## AERATION

### FAN SYSTEMS

#### Triumph Fans

The future of fan technology: the high efficiency, cost saving Triumph Fan! Choose from 7.5hp and 10hp, single or three phase. Designed to be used on new or existing sites. Control boxes are UL and cUL certified.

#### Features

- 2 year warranties.
- No transition to assemble.
- Up to 3x faster drying on select models with heater!
- Great replacement option for existing sites.



#### Centrifugal Fans

Fan housings are manufactured with heavy duty 11 gauge sides resulting in significantly less vibration and a more stable platform. This adds longevity to the life of the fan. Control boxes are UL and cUL certified.

#### Features

- 2 year warranties.
- Adjustable legs.
- Fan blades are solid welded.
- Fan wheels are statically and dynamically balanced for trouble-free operation.
- High or low speed available.



#### Axial Fans

Axial fans cast aluminum airfoil blade ensures economical maximum air-flow at lower static pressures. Fan blades are precision-balanced to achieve vibration-free operation. Control boxes are UL and cUL certified.

#### Features

- 2 year warranties.
- Plated screen guard.
- High quality motors for heavy-duty dependable fan operation.
- Available as stand alone or with heater option.



#### Transitions

The aerodynamically engineered "channel-flow" shape delivers air between the fan and bin plenum. Multiple sizes fit every size fan and heater.



#### Heaters

2' housing connects directly to the fan. A wide variety of sizes and options, including axial, super low temp, and centrifugal heaters.



**FOURTH GENERATION, FAMILY-OWNED COMPANY**



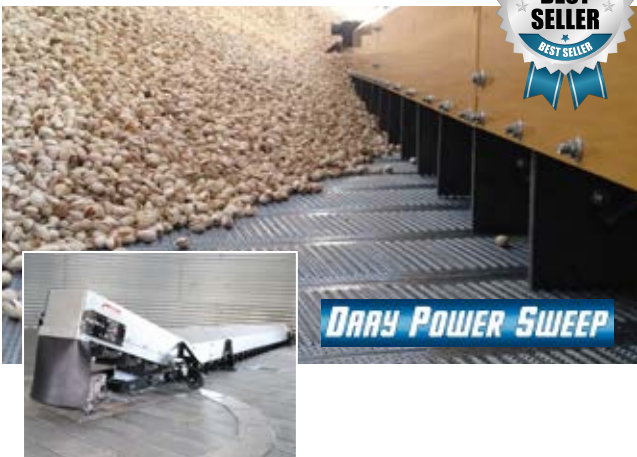


## UNLOADS

### AUGER & PADDLE SYSTEMS

#### Daay Power Sweep

The Daay Power Sweep can be manufactured for bins from **15' up to 66'**. It is designed to be fully submersed in grain. It has the ability to perform single or multiple passes. The paddle chain moves grain gently and evenly to the sump. And has a capacity of **5,000 bushels per hour** at 350 rpm tightener shaft speed.



#### Daay Bin Paddle Sweep

The sweep has no dangerous augers to worry about and simply moves the grain with flexible rubber paddles. Explosion proof, all-weather quick change motors and tractor tread tires are among some of the features. The sweeps can be manufactured to fit in grain bins from **15' to 105'** in size with **5,500 bushels per hour** maximum capacity.



#### Sudenga Power Sweep

Posi-Shift 8" and 10" round tube power sweeps. 61' 10" bins (8") and 80' 5" bins (10"). Heavy-duty gearboxes, galvanized under bin tube and a sweep back shield. Sudenga 10", 6,000 bushels per hour u-trough power sweeps are also available.

#### Springland U Trough Power Sweep

High capacity unloading with 5,000-7,500 BPH unloading capacity. Gearbox sweep drive features a fully enclosed shifting mechanism. Sweep stop limits the sweep to one revolution around the bin and is controlled outside the bin.



MADE IN THE USA

# ACCESSORIES

SIOUX STEEL FARM GRAIN SYSTEMS

## ADDITIONAL EQUIPMENT

FARM GRAIN SYSTEMS



Pneumatic air system used for conveying low volumes of grain at a bin site. Ideal for transferring grain to or from: dryers, trucks, dump pits, hoppers, storage bins, silos, mixers, bunkers, railcars, and feed bins.

- Versatile and powerful.
- Easy portability.
- Convenient fork lift base.
- Gently “push” grain 100’ to 250’(30m to 75m) or more.



Cost effective method to accurately monitor the levels of material in your bin. As the material in your bin reaches the device, it pushes against the activator, turning the color from black to green.

- Easy installation & glows-in-the-dark.
- 2x larger than other brands.
- No electricity required.
- Maintenance free & cost effective.



## FAMILY-OWNED SINCE 1918

FOUR GENERATIONS OF PROVEN QUALITY



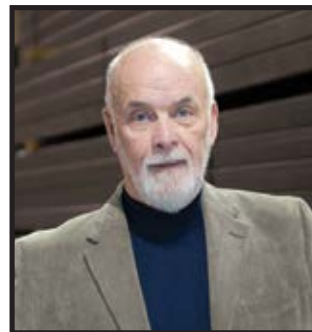
**CHARLES RYSDON**  
(1883-1940)

*Founder &  
First Generation Owner*



**MAX RYSDON**  
(1903-1991)

*Second  
Generation Owner*



**PHIL RYSDON**  
(1937-PRESENT)

*Chairman &  
Third Generation Owner*



**SCOTT RYSDON**  
(1963-PRESENT)

*President/CEO &  
Fourth Generation Owner*

Sioux Steel Company prides itself on its reputation for integrity, honesty, and quality products. During the last 15 years, Sioux Steel has intuitively expanded its products with the development of grain bagging systems, paddle sweeps, on-farm containment and Pro-Tec engineered fabric buildings that can be used for everything from grain storage to confinement cattle feeding.

# SIZES

SIoux STEEL FARM GRAIN SYSTEMS



## **BIN CAPACITIES/VOLUMES SHOWN WITH AIR FLOOR OPTION.**

Bin volume calculations based upon ASAE S413.1; 28 degree angle of fill, 6% compaction & 769kg/m3 bulk density. Total height based upon standard 30" peak cap.

<b>18' DIAMETER Farm Bin</b>								
RINGS	CAPACITY		VOLUME		HEIGHT			
	Bushels	Metric Tons	Cubic Feet	Cubic Meters	Eave (Feet)	Eave (Meters)	Total (Feet)	Total (Meters)
3	2,463	67	2,891	82	11' 0"	3.35	16' 0"	4.87
4	3,249	88	3,814	108	14' 8"	4.47	19' 8"	5.99
5	4,035	109	4,738	134	18' 4"	5.59	23' 4"	7.10
6	4,822	131	5,661	160	22' 0"	6.71	27' 0"	8.22
7	5,608	152	6,584	186	25' 8"	7.82	30' 8"	9.34
8	6,395	173	7,507	213	29' 4"	8.94	34' 4"	10.46
9	7,181	195	8,431	239	33' 0"	10.06	38' 0"	11.57
10	7,967	216	9,354	265	36' 8"	11.18	41' 8"	12.69

### **18' DIAMETER FARM BIN WITHOUT AIR FLOOR OPTION:**

To Above Calculations	Bushels	Metric Tons	Cubic Feet	Cubic Meters
<b>ADD +</b>	237	6	278	8



<b>21' DIAMETER Farm Bin</b>								
RINGS	CAPACITY		VOLUME		HEIGHT			
	Bushels	Metric Tons	Cubic Feet	Cubic Meters	Eave (Feet)	Eave (Meters)	Total (Feet)	Total (Meters)
3	3,429	93	4,026	114	11' 0"	3.35	16' 10"	5.14
4	4,499	122	5,282	150	14' 8"	4.47	20' 6"	6.25
5	5,570	151	6,539	185	18' 4"	5.59	24' 2"	7.37
6	6,640	180	7,796	221	22' 0"	6.71	27' 10"	8.49
7	7,711	209	9,052	256	25' 8"	7.82	31' 6"	9.61
8	8,781	238	10,309	292	29' 4"	8.94	35' 2"	10.72
9	9,851	267	11,565	327	33' 0"	10.06	38' 10"	11.84
10	10,922	296	12,822	363	36' 8"	11.18	42' 6"	12.96

### **21' DIAMETER FARM BIN WITHOUT AIR FLOOR OPTION:**

To Above Calculations	Bushels	Metric Tons	Cubic Feet	Cubic Meters
<b>ADD +</b>	322	9	378	11



<b>24' DIAMETER Farm Bin</b>								
RINGS	CAPACITY		VOLUME		HEIGHT			
	Bushels	Metric Tons	Cubic Feet	Cubic Meters	Eave (Feet)	Eave (Meters)	Total (Feet)	Total (Meters)
3	4,580	124	5,377	152	11' 0"	3.35	18' 2"	5.54
4	5,978	162	7,018	199	14' 8"	4.47	21' 10"	6.66
5	7,376	200	8,659	245	18' 4"	5.59	25' 6"	7.78
6	8,774	238	10,300	292	22' 0"	6.71	29' 2"	8.90
7	10,172	276	11,942	338	25' 8"	7.82	32' 10"	10.01
8	11,570	314	13,583	385	29' 4"	8.94	36' 6"	11.13
9	12,968	351	15,224	431	33' 0"	10.06	40' 2"	12.25
10	14,366	389	16,866	478	36' 8"	11.18	43' 10"	13.37

### **24' DIAMETER FARM BIN WITHOUT AIR FLOOR OPTION:**

To Above Calculations	Bushels	Metric Tons	Cubic Feet	Cubic Meters
<b>ADD +</b>	421	11	494	14



# SIZES

## SIoux STEEL FARM GRAIN SYSTEMS

### **BIN CAPACITIES/VOLUMES SHOWN WITH AIR FLOOR OPTION.**

Bin volume calculations based upon ASAE S413.1; 28 degree angle of fill, 6% compaction & 769kg/m3 bulk density. Total height based upon standard 30" peak cap.

<b>27' DIAMETER Farm Bin</b>								
RINGS	CAPACITY		VOLUME		HEIGHT			
	Bushels	Metric Tons	Cubic Feet	Cubic Meters	Eave (Feet)	Eave (Meters)	Total (Feet)	Total (Meters)
4	7,693	208	9,032	256	14' 8"	4.47	22' 8"	6.92
5	9,463	256	11,109	315	18' 4"	5.59	26' 4"	8.03
6	11,232	304	13,186	373	22' 0"	6.71	30' 0"	9.15
7	13,001	352	15,264	432	25' 8"	7.82	33' 8"	10.27
8	14,771	400	17,341	491	29' 4"	8.94	37' 4"	11.39
9	16,540	448	19,418	550	33' 0"	10.06	41' 0"	12.50
10	18,309	496	21,495	609	36' 8"	11.18	44' 8"	13.62

### **27' DIAMETER FARM BIN WITHOUT AIR FLOOR OPTION:**

To Above Calculations	Bushels	Metric Tons	Cubic Feet	Cubic Meters
<b>ADD +</b>	533	14	626	18



<b>30' DIAMETER Farm Bin</b>								
RINGS	CAPACITY		VOLUME		HEIGHT			
	Bushels	Metric Tons	Cubic Feet	Cubic Meters	Eave (Feet)	Eave (Meters)	Total (Feet)	Total (Meters)
4	9,655	262	11,335	321	14' 8"	4.47	23' 7"	7.18
5	11,840	321	13,900	394	18' 4"	5.59	27' 3"	8.30
6	14,024	380	16,464	466	22' 0"	6.71	30' 11"	9.42
7	16,208	439	19,029	539	25' 8"	7.82	34' 7"	10.54
8	18,393	498	21,593	611	29' 4"	8.94	38' 3"	11.65
9	20,577	558	24,158	684	33' 0"	10.06	41' 11"	12.77
10	22,762	617	26,722	757	36' 8"	11.18	45' 7"	13.89

### **30' DIAMETER FARM BIN WITHOUT AIR FLOOR OPTION:**

To Above Calculations	Bushels	Metric Tons	Cubic Feet	Cubic Meters
<b>ADD +</b>	658	18	772	22



<b>33' DIAMETER Farm Bin</b>								
RINGS	CAPACITY		VOLUME		HEIGHT			
	Bushels	Metric Tons	Cubic Feet	Cubic Meters	Eave (Feet)	Eave (Meters)	Total (Feet)	Total (Meters)
4	11,874	322	13,940	395	14' 8"	4.47	24' 5"	7.44
5	14,517	393	17,043	483	18' 4"	5.59	28' 1"	8.56
6	17,160	465	20,146	570	22' 0"	6.71	31' 9"	9.68
7	19,803	537	23,249	658	25' 8"	7.82	35' 5"	10.80
8	22,446	608	26,352	746	29' 4"	8.94	39' 1"	11.91
9	25,089	680	29,455	834	33' 0"	10.06	42' 9"	13.03
10	27,732	752	32,558	922	36' 8"	11.18	46' 5"	14.15

### **33' DIAMETER FARM BIN WITHOUT AIR FLOOR OPTION:**

To Above Calculations	Bushels	Metric Tons	Cubic Feet	Cubic Meters
<b>ADD +</b>	796	22	934	26





**BIN CAPACITIES/VOLUMES SHOWN WITH AIR FLOOR OPTION.**

Bin volume calculations based upon ASAE S413.1; 28 degree angle of fill, 6% compaction & 769kg/m3 bulk density. Total height based upon standard 30" peak cap.

<b>36' DIAMETER Farm Bin</b>								
RINGS	CAPACITY		VOLUME		HEIGHT			
	Bushels	Metric Tons	Cubic Feet	Cubic Meters	Eave (Feet)	Eave (Meters)	Total (Feet)	Total (Meters)
4	14,357	389	16,856	477	14' 8"	4.47	25' 3"	7.70
5	17,503	474	20,549	582	18' 4"	5.59	28' 11"	8.82
6	20,648	560	24,241	686	22' 0"	6.71	32' 7"	9.93
7	23,794	645	27,934	791	25' 8"	7.82	36' 3"	11.05
8	26,939	730	31,627	896	29' 4"	8.94	39' 11"	12.17
9	30,085	815	35,320	1,000	33' 0"	10.06	43' 7"	13.29
10	33,231	901	39,013	1,105	36' 8"	11.18	47' 3"	14.40

**36' DIAMETER FARM BIN WITHOUT AIR FLOOR OPTION:**

To Above Calculations	Bushels	Metric Tons	Cubic Feet	Cubic Meters
<b>ADD +</b>	947	26	1112	31



<b>42' DIAMETER Farm Bin</b>								
RINGS	CAPACITY		VOLUME		HEIGHT			
	Bushels	Metric Tons	Cubic Feet	Cubic Meters	Eave (Feet)	Eave (Meters)	Total (Feet)	Total (Meters)
4	20,160	546	23,667	670	14' 8"	4.47	27' 0"	8.23
5	24,441	662	28,694	813	18' 4"	5.59	30' 8"	9.35
6	28,722	778	33,720	955	22' 0"	6.71	34' 4"	10.46
7	33,004	894	38,747	1,097	25' 8"	7.82	38' 0"	11.58
8	37,285	1,010	43,773	1,240	29' 4"	8.94	41' 8"	12.70
9	41,567	1,126	48,800	1,382	33' 0"	10.06	45' 4"	13.82
10	45,848	1,242	53,826	1,524	36' 8"	11.18	49' 0"	14.94

**42' DIAMETER FARM BIN WITHOUT AIR FLOOR OPTION:**

To Above Calculations	Bushels	Metric Tons	Cubic Feet	Cubic Meters
<b>ADD +</b>	1289	35	1514	43



<b>48' DIAMETER Farm Bin</b>								
RINGS	CAPACITY		VOLUME		HEIGHT			
	Bushels	Metric Tons	Cubic Feet	Cubic Meters	Eave (Feet)	Eave (Meters)	Total (Feet)	Total (Meters)
4	27,138	735	31,860	902	14' 8"	4.47	28' 9"	8.75
5	32,730	887	38,425	1,088	18' 4"	5.59	32' 5"	9.87
6	38,322	1,038	44,990	1,274	22' 0"	6.71	36' 1"	10.99
7	43,914	1,190	51,555	1,460	25' 8"	7.82	39' 9"	12.11
8	49,506	1,342	58,120	1,646	29' 4"	8.94	43' 5"	13.22
9	55,098	1,493	64,685	1,832	33' 0"	10.06	47' 1"	14.34
10	60,690	1,645	71,250	2,018	36' 8"	11.18	50' 9"	15.46

**48' DIAMETER FARM BIN WITHOUT AIR FLOOR OPTION:**

To Above Calculations	Bushels	Metric Tons	Cubic Feet	Cubic Meters
<b>ADD +</b>	1684	46	1977	56

